



19, rue de l'Aviation 21121 DAROIS FRANCE ☎: (33) 03 80 35 60 62 Fax: (33) 03 80 35 60 63

Exploitation

REF: Q EX NO 07 00

# MCR 4S FLIGHT MANUAL

|                 |  |
|-----------------|--|
| N° d'exemplaire |  |
|-----------------|--|

Edition de base:

| Pages | Date     | Rédigé par  | Visa | Vérifié par | Visa |
|-------|----------|-------------|------|-------------|------|
| 39    | 30/04/01 | N. BOUCHOUT |      | C. BELIN    |      |

Mise à jour:

|                      |          |             |  |          |  |
|----------------------|----------|-------------|--|----------|--|
| 17                   | 28/06/01 | N. BOUCHOUT |  | C. BELIN |  |
| (+1) ; 11-17 ; 33-36 | 13/05/02 | N. BOUCHOUT |  | C. BELIN |  |
| 13-14 ; 18           | 05/03/03 | N. BOUCHOUT |  | C. BELIN |  |
| 29-31                | 25/08/03 | N. BOUCHOUT |  | C. BELIN |  |
| 38                   | 19/04/04 | N. BOUCHOUT |  | C. BELIN |  |
| 38                   | 11/01/05 | N. MAHUET   |  | C. BELIN |  |
| 24-26 ; 30 ; 31      | 27/01/05 | N. BOUCHOUT |  | C. BELIN |  |
|                      |          |             |  |          |  |
|                      |          |             |  |          |  |
|                      |          |             |  |          |  |

DATE : 27/01/05

## 0. WARNING

**THIS DOCUMENT IS PROVIDED FOR INFORMATION ONLY. IT IS THE OWNER'S RESPONSIBILITY TO CHECK THE EXACTNESS OF THE PRESENT MATERIAL WITH RESPECT TO HIS/HER ACTUAL AIRCRAFT.**

# 1. FLIGHT MANUAL

**Model :**

*MCR 4S*

**Serial Number :**

**Registration :**

**Document number :**

**Release date :**

The pages identified by "Appr" are approved by :

Signature :

Authority :

Stamp :

Date of approval:

Certain details must be added by the builder to reflect the exact configuration and installation of engine, Propeller and instrumentation.

**THIS PLANE MUST ALWAYS BE USED IN ACCORDANCE WITH THE INFORMATION AND LIMITATIONS CONTAINED IN THIS DOCUMENT.**

**THIS PLANE WAS BUILT FROM A KIT.**

**IT MUST NOT BE USED FOR HIRE OR REWARD.**

**THE USER IS RESPONSIBLE FOR THE USE OF THE AIRCRAFT , ENSURING THAT IT COMPLIES WITH REGULATIONS AND INFORMING ANY PASSENGER OF THE LIMITATIONS OF THE AIRCRAFT WITH RESPECT TO ITS AIRWORTHINESS LIMITATIONS.**

**THIS FLIGHT MANUAL WAS ESTABLISHED ACCORDING TO FRENCH REGULATION.**

**1.1. REGISTRATION OF THE OVERHAULS**

All amendments to this document must be entered in the table below, except weighing data, and all cases of approved sections, aimed and approved by the Authority responsible for Airworthiness.

The new text or amendment in the revised pages will be indicated by a dark vertical line in the left margin and the N° of the amendment and the date will be indicated on the bottom left corner of the page.

| Revision N° | Affected section | Affected pages | Date | Approval | Date | Date of insertion | Signed |
|-------------|------------------|----------------|------|----------|------|-------------------|--------|
|             |                  |                |      |          |      |                   |        |
|             |                  |                |      |          |      |                   |        |
|             |                  |                |      |          |      |                   |        |
|             |                  |                |      |          |      |                   |        |
|             |                  |                |      |          |      |                   |        |
|             |                  |                |      |          |      |                   |        |



### **1.3. TABLE OF CONTENTS**

|  |           |
|--|-----------|
| <b>0. WARNING</b>                            | <b>2</b>  |
| <b>1. FLIGHT MANUAL</b>                      | <b>3</b>  |
| 1.1. REGISTRATION OF THE OVERHAULS           | 4         |
| 1.2. LIST OF PAGES                           | 5         |
| 1.3. TABLE OF CONTENTS                       | 6         |
| <b>2. GENERAL</b>                            | <b>9</b>  |
| 2.1. INTRODUCTION                            | 9         |
| 2.2. BASIS OF CERTIFICATION                  | 9         |
| 2.3. WARNINGS, ALARMS AND NOTES              | 9         |
| 2.4. SPECIFICATIONS                          | 10        |
| 2.5. CONTROL SURFACE DEFLECTION              | 10        |
| 2.6. THREE VIEW DIAGRAM                      | 11        |
| <b>3. LIMITATIONS</b>                        | <b>13</b> |
| 3.1. INTRODUCTION                            | 13        |
| 3.2. AIRSPEED                                | 13        |
| 3.3. INDICATED AIRSPEED INSTRUMENTS MARKINGS | 14        |
| 3.4. ENGINE INSTALLATION                     | 15        |
| 3.5. ENGINE INSTRUMENT MARKINGS              | 18        |
| 3.6. INSTRUMENT MARKINGS                     | 19        |
| 3.7. WEIGHT                                  | 19        |
| 3.8. WEIGHT & BALANCE                        | 19        |
| 3.9. APPROVED MANOEUVRES                     | 20        |
| 3.10. MANOEUVRING LOAD FACTOR                | 20        |
| 3.11. MINIMUM FLIGHT CREW                    | 20        |
| 3.12. TYPES OF FLIGHT                        | 20        |
| 3.13. FUEL                                   | 20        |
| 3.14. MAXIMUM NUMBER OF SEATS                | 20        |
| 3.15. TIRE PRESSION                          | 21        |
| 3.16. INSTRUMENT PANEL WEIGHT LIMITATION     | 21        |
| 3.17. SOLO FLIGHT                            | 21        |
| 3.18. OTHER LIMITATIONS                      | 21        |
| 3.19. PLACARDS                               | 21        |
| <b>4. EMERGENCY PROCEDURES</b>               | <b>23</b> |
| 4.1. INTRODUCTION                            | 23        |

|   |           |
|---|-----------|
| 4.2. ENGINE FAILURE                                     | 23        |
| 4.3. IN-FLIGHT RESTART                                  | 24        |
| 4.4. SMOKE AND FIRE                                     | 24        |
| 4.5. GLIDING  | 25        |
| 4.6. FORCED LANDING                                     | 25        |
| 4.7. RECOVERY FROM AN UNINTENTIONAL SPIN                | 26        |
| 4.8. OTHER EMERGENCIES                                  | 26        |
| <b>5. NORMAL PROCEDURES</b>                             | <b>27</b> |
| 5.1. INTRODUCTION                                       | 27        |
| 5.2. DAILY CHECK  | 27        |
| 5.3. PRE-FLIGHT CHECK                                   | 29        |
| 5.4. NORMAL PROCEDURES AND CHECK-LISTS                  | 29        |
| <b>6. PERFORMANCES</b>                                  | <b>33</b> |
| 6.1. INTRODUCTION                                       | 33        |
| 6.2. APPROVED DATA                                      | 33        |
| <b>7. WEIGHT &amp; BALANCE</b>                          | <b>35</b> |
| 7.1. INTRODUCTION                                       | 35        |
| 7.2. WEIGHT & BALANCE REGISTRATION AND LOADING ENVELOPE | 35        |
| <b>8. AIRCRAFT OPERATION, SERVICING AND MAINTENANCE</b> | <b>37</b> |
| 8.1. INTRODUCTION                                       | 37        |
| 8.2. AIRCRAFT MAINTENANCE SCHEDULE                      | 37        |
| 8.3. AIRCRAFT MODIFICATIONS AND REPAIRS                 | 37        |
| 8.4. PARKING  | 38        |
| 8.5. CLEANING AND TREATMENT                             | 38        |
| 8.6. DE-RIGGING AND RIGGING                             | 38        |
| <b>9. SUPPLEMENTARY SYSTEMS AND EQUIPMENTS</b>          | <b>39</b> |
| 9.1. INTRODUCTION                                       | 39        |
| 9.2. MINIMUM EQUIPMENT LIST                             | 39        |
| 9.3. LIST OF THE SUPPLÉMENTARY SYSTEMS AND EQUIPMENTS   | 39        |
| 9.4. SUPPLEMENTARY ELEMENTS DESCRIPTIONS                | 39        |

**Intentionally left blank**

## 2. GENERAL

### 2.1. INTRODUCTION

The flight manual for the aircraft was designed to provide pilots and instructors with the information necessary to efficiently and safely fly this very light aircraft.

This manual contains information that are imperative to be given to the *MCR 4S* pilot. It also contains supplementary information given by the builder.

The builder should complete the information appropriate to the particular configuration and selection of options.

A special place must be reserved on the luggage compartment floor in order to store this flight manual.

### 2.2. BASIS OF CERTIFICATION

This type of aircraft was approved by \_\_\_\_\_ in accordance with the regulations applicable to kit aircraft, including the amendment \_\_\_\_\_ and the certificate of restricted Airworthiness N° \_\_\_\_\_ has been issued on the \_\_\_\_\_.

Category of Airworthiness : **Restricted** (kit)

Basis of certification and/or acceptance:

### 2.3. WARNINGS, ALARMS AND NOTES

The following definitions apply to **Warnings, Alarms & Notes** used in the flight manual.

**ALARM:**

Signifies that a failure to observe the corresponding procedures will lead to an immediate or important deterioration of the flight safety.

**WARNING:**

Signifies that a failure to observe the corresponding procedures will lead to a minor or major deterioration of the long term flight safety.

NOTE:

Attracts the attention to a condition which although not particularly related to the flight safety is important or unusual.

**2.4. SPECIFICATIONS**

Kit aircraft of the type : *Dyn'Aéro MCR 4S*

Cantilever low-mounted wing.

Carbon structure and wing skin with control surface skins made in light alloy.

Engine and Propeller

|                |        |                |
|----------------|--------|----------------|
| Span           | 8.66   | m              |
| Wing surface   | 8.15   | m <sup>2</sup> |
| Aspect ratio   | 9.2    |                |
| Cabin width    | 1.17   | m              |
| Fuel capacity  | 2 x 60 | l              |
| Overall Length | 6.72   | m              |
| Height         | 1.95   | m              |

**2.5. CONTROL SURFACE DEFLECTION**

- Ailerons :           - 20° <sup>(±1)</sup> trailing edge upwards  
                          +10° <sup>(±1)</sup> trailing edge downwards
- Flaps :               0-30° <sup>(+0-1)</sup>
- Rudder :            20° <sup>(-0+5)</sup> in both directions (left and right)
- Tailplane :         - 10° <sup>(+0-2)</sup> trailing edge upwards  
                          +3.5° <sup>(-0+1)</sup> trailing edge downwards

## **2.6. THREE VIEW DIAGRAM**

**Intentionally left blank**

## 3. LIMITATIONS

### 3.1. INTRODUCTION

This section includes operating limitations, reference marks of instruments and placards necessary for the safe use of the aircraft, its engine, standard systems and equipment.

The limitations included in this section were approved by .

### 3.2. AIRSPEED

Airspeed limits and their operational significance.

|     | Airspeed                                  | (IAS)               | Remarks  |
|-----|---|---------------------|--|
| VNE | Never exceed speed                        | 306 km/h<br>165 kts | Velocity you must <u>N</u> ever <u>E</u> xceed, in any case  |
| VNO | Maximum structural cruising speed         | 243 km/h<br>131 kts | Do not exceed this <u>V</u> elocity in <u>N</u> ormal <u>O</u> perations, except in calm air, and then , only with great cautions.                           |
| VA  | Manoeuvring speed                         | 219 km/h<br>118 kts | Do not apply abrupt or full-range control deflections beyond this speed, because under certain conditions, the Aircraft might be exposed to excessive loads. |
| VFE | Maximum speed allowed with flaps extended | 160 km/h<br>86 kts  | Do not exceed this <u>V</u> elocity with <u>F</u> laps <u>E</u> xtended  |

### **3.3. INDICATED AIRSPEED INSTRUMENTS MARKINGS**

Air speed indicator reference marks and colour significance.

| Marking        | (IAS)                               | Significance   |
|----------------|-------------------------------------|--|
| White segment  | (83 / 160 km/h)<br>(45 / 86 kts)    | Speed range allowed with flaps extended  |
| Green segment  | (112 / 243 km/h)<br>(61 / 131 kts)  | Speed range for normal operational flight                                      |
| Yellow segment | (243 / 306 km/h)<br>(131 / 165 kts) | Manoeuvres must be carried out with caution and only in conditions of calm air |
| Red segment    | (306 km/h)<br>(165 kts)             | Maximum speed for all operations   |

**3.4. ENGINE INSTALLATION**

Only the following engine and propeller configurations are authorised.

**3.4.1. Rotax 912 S Engine**

|                                   |                       |
|-----------------------------------|-----------------------|
| Engine manufacturer               | Rotax                 |
| Engine type                       | 912 S                 |
| Engine/propeller reduction ratio  | 2.43 / 1              |
| Maximum power                     |                       |
| Take-off                          | 99 HP                 |
| Continuous                        | 93 HP                 |
| Maximum manifold pressure         |                       |
| Take-off                          | 27,5 "Hg / 930 mbar   |
| Continuous                        | 27 "Hg / 920 mbar     |
| Maximum engine RPM                |                       |
| Take-off                          | 5800 RPM              |
| Continuous                        | 5500 RPM              |
| Maximum Cylinder Head Temperature | 135 °C / 275 °F       |
| Maximum Oil Temperature:          | 130 °C / 266 °F       |
| Oil pressure                      |                       |
| Minimum:                          | 0.8 Bar               |
| Maximum:                          | 7 Bars                |
| Fuel pressure                     |                       |
| Minimum:                          | 0.15 Bar              |
| Maximum:                          | 0.40 Bar              |
| Octane grade of fuel:             | Refer to Rotax manual |
| Oil quality:                      | Refer to Rotax manual |

3.4.2. Rotax 914 Engine

|                                   |                               |
|-----------------------------------|-------------------------------|
| Engine manufacturer               | Rotax                         |
| Engine type                       | 914                           |
| Engine/propeller reduction ratio  | 2.43 / 1                      |
| Maximum power                     |                               |
| Take-off                          | 113 HP                        |
| Continuous                        | 100 HP                        |
| Maximum manifold pressure         |                               |
| Take-off                          | 38.4 "Hg / 1300 mbar          |
| Continuous                        | 34 "Hg / 1150 mbar            |
| Maximum engine RPM                |                               |
| Take-off                          | 5800 RPM                      |
| Continuous                        | 5500 RPM                      |
| Maximum Cylinder Head Temperature | 135 °C / 275 °F               |
| Maximum Oil Temperature:          | 130 °C / 266 °F               |
| Oil pressure                      |                               |
| Minimum:                          | 1.5 Bar                       |
| Maximum:                          | 7 Bars                        |
| Fuel pressure                     |                               |
| Minimum:                          | pression admission + 0.15 Bar |
| Maximum:                          | pression admission + 0.35 Bar |
| Octane grade of fuel:             | Refer to Rotax manual         |
| Oil quality:                      | Refer to Rotax manual         |

3.4.3. MT variable pitch Propeller

|  |  |
|--|--|
| Propeller manufacturer                                       | MT Propeller                           |
| Propeller model  | MTV-6-A/156-122                        |
| Type   | Three-bladed, hydraulic variable pitch |
| Propeller diameter   | 1.56 m                                 |
| Reference pitch setting (75% of propeller radius)<br>normal: | variable pitch                         |
| Maximum allowed propeller rotation speed                     | 2400 rpm                               |
| Torque   | 4.6 daN.m                              |

|  |                                      |
|--|--------------------------------------|
| Propeller manufacturer                                       | MT Propeller                         |
| Propeller model  | MTV-21-A/170-125                     |
| Type   | Two-bladed, hydraulic variable pitch |
| Propeller diameter   | 1.70 m                               |
| Reference pitch setting (75% of propeller radius)<br>normal: | variable pitch                       |
| Maximum allowed propeller rotation speed                     | 2400 rpm                             |
| Torque   | 4.6 daN.m                            |

### 3.5. ENGINE INSTRUMENT MARKINGS

#### 3.5.1. Rotax 912 S Engine

# ROTAX 912 S

| Instrument                | Units  | Red line Minimum Limit | Yellow sector Warning Range | Green sector Normal Range | Yellow sector Warning Range | Red Line Maximum Limit |
|---------------------------|--------|------------------------|-----------------------------|---------------------------|-----------------------------|------------------------|
| Tachometer                | Tr/Min | 1400                   | 1400 - 3500                 | 3500 - 5500               | 5500 - 5800                 | 5800                   |
| Oil temperature           | °C     | 50                     | 50 - 90                     | 90 - 110                  | 110 - 130                   | 130                    |
|                           | °F     | 122                    | 122 - 194                   | 194 - 230                 | 230 - 266                   | 266                    |
| Cylinder Head Temperature | °C     | 60                     | 60 - 80                     | 80 - 110                  | 110 to 135                  | 135                    |
|                           | °F     | 140                    | 140 - 176                   | 176 - 230                 | 230 to 275                  | 275                    |
| Fuel Pressure             | Bar    | 0.15                   |                             | 0.15 - 0.40               |                             | 0.40                   |
|                           | PSI    | 2.2                    |                             | 2.2 - 5.8                 |                             | 5.8                    |
| Oil Pressure              | Bar    | 0.8                    | 0.8 - 2                     | 2 - 5                     | 5 - 7                       | 7                      |
| Fuel Quantity             | Litre  | 1                      |                             |                           |                             | 80                     |

**Note carefully :**

Do not switch off the main switch before turning off the engine.

#### 3.5.2. Rotax 914 Engine

# ROTAX 914

| Instrument                | Units  | Red line Minimum Limit       | Yellow sector Warning Range | Green sector Normal Range            | Yellow sector Warning Range | Red Line Maximum Limit       |
|---------------------------|--------|------------------------------|-----------------------------|--------------------------------------|-----------------------------|------------------------------|
| Tachometer                | Tr/Min | 1400                         | 1400 - 3500                 | 3500 - 5500                          | 5500 - 5800                 | 5800                         |
| Oil temperature           | °C     | 50                           | 50 - 90                     | 90 - 110                             | 110 - 130                   | 130                          |
|                           | °F     | 122                          | 122 - 194                   | 194 - 230                            | 230 - 266                   | 266                          |
| Cylinder Head Temperature | °C     | 60                           | 60 - 80                     | 80 - 110                             | 110 - 135                   | 135                          |
|                           | °F     | 140                          | 140 - 176                   | 176 - 230                            | 230 - 266                   | 266                          |
| Fuel Pressure             | Bar    | Manifold pressure.<br>+ 0.15 |                             | Manifold pressure.<br>+ 0.15 to 0.35 |                             | Manifold pressure.<br>+ 0.35 |
|                           | PSI    | + 2.2                        |                             | + 2.2 to 5.08                        |                             | + 5.08                       |
| Oil Pressure              | Bar    | 0.8                          | 0.8 - 2                     | 2 - 5                                | 5 - 7                       | 7                            |
| Fuel Quantity             | Litre  |                              |                             |                                      |                             | 80                           |

**Note carefully :**

Do not switch off the main switch before turning off the engine.

### 3.6. INSTRUMENT MARKINGS

(to be completed by the builder according to the actual instrument configuration)

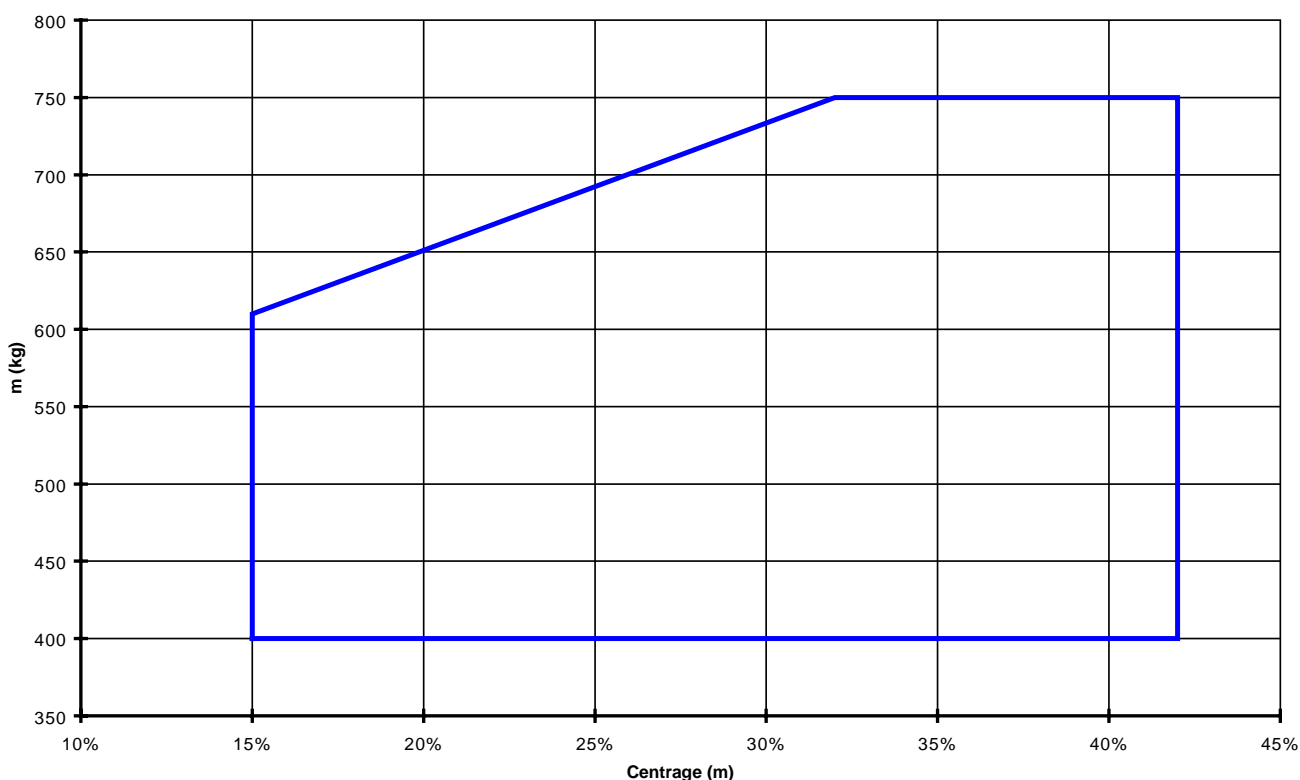
### 3.7. WEIGHT

|                             |        |
|-----------------------------|--------|
| Maximum take-off weight :   | 750 kg |
| Maximum landing weight :    | 750 kg |
| Maximum weight without fuel | 664 kg |

### 3.8. WEIGHT & BALANCE

Centre of Gravity range 15/42% M.A.C.

Datum Cma



M.A.C. = 960 mm ; reference datum : wing leading-edge.

### **3.9. APPROVED MANOEUVRES**

THIS AIRCRAFT IS CERTIFIED IN THE NORMAL CATEGORY.

AEROBATIC FLIGHT IS PROHIBITED.

SPINS ARE PROHIBITED.

### **3.10. MANOEUVRING LOAD FACTOR**

+3.8 / -1.52 g

### **3.11. MINIMUM FLIGHT CREW**

Minimum flight crew is one pilot.

Four people onboard maximum.

### **3.12. TYPES OF FLIGHT**

VFR / DAY.

### **3.13. FUEL**

|                             |   |                       |
|-----------------------------|---|-----------------------|
| Total fuel                  | : | 120 l                 |
| Useable fuel                | : | 118 l                 |
| Unusable fuel               | : | 2 l                   |
| Fuel Octane grade approved: |   | Refer to Rotax manual |

### **3.14. MAXIMUM NUMBER OF SEATS**

Four

### **3.15. TIRE PRESSION**

Nose landing gear : 2.2 bar  
Main landing gear : 2.5 bar

### **3.16. INSTRUMENT PANEL WEIGHT LIMITATION**

Maximum weight of instrument panel when equipped and wired = 15 kg

### **3.17. SOLO FLIGHT**

For each solo flight, the unused harness must be locked.

### **3.18. OTHER LIMITATIONS**

**USE FOR HIRE OR REWARD - PROHIBITED.**

**THIS AIRCRAFT MUST BE USED STRICTLY IN ACCORDANCE WITH THE LEGISLATION APPROPRIATE FOR KIT AIRCRAFT.**

### **3.19. PLACARDS**

#### **3.19.1. During initial experimentation period**

Minimum 5 cm high placard "EXPERIMENTAL" must be placed next to each cabin openings.

#### **3.19.2. In front of pilot view**

Written in minimum 6 mm high letters and so that both pilots can easily read it, the following placard :

**THE COMPLIANCE OF THIS AIRCRAFT WITH A  
CERTIFICATE OF AIRWORTHINES HAS NOT BEEN  
DEMONSTRATED.**

**USE FOR HIRE OR REWARD PROHIBITED.**

**AEROBATIC FLIGHT AND INTENTIONAL SPINS ARE  
PROHIBITED.**

**MANOEUVRING SPEED 118 KTS.**

#### **3.19.3. Air speed indicator**

Each air speed indicator must be marked as indicated in paragraph 4.3

#### 3.19.4. Engine installation instruments

Each engine installation instrument must be marked as indicated in paragraph 4.5.

#### 3.19.5. Control system markings

Each control system other than main flight control systems must be marked in order to explain its function and operation mode : brake control system, parachute control system must be marked in red if installed...

#### 3.19.6. Miscellaneous placards and markings

In luggage compartment : "Maximum luggage weight = 40 kg"

Fuel tank filler : "Fuel tank : 2 x 60 l  
Mini fuel grade : RON 95"

Oil tank filler "Oil tank : 3.5 l  
10 W 40"

## 4. EMERGENCY PROCEDURES

### 4.1. INTRODUCTION

This section provides a list of appropriate actions in the event of certain emergencies. Providing that the aircraft is well maintained and proper pre-flight inspections are made, emergencies due to failure of the aircraft, aircraft engine or other systems is very rare.

However, should an emergency occur, the procedures described in this section of the manual should be adopted.

### 4.2. ENGINE FAILURE

#### 4.2.1. Engine failure on take-off run

If there is enough runway length remaining :

- Fully reduce Power and apply brakes.

If there is insufficient runway length remaining :

- Fully reduce power
- Brake hard
- Fuel tap ..... **closed**
- Magnetos ..... **OFF**
- Battery ..... **OFF**

#### 4.2.2. Engine failure immediately after take-off

- Airspeed ..... **92 knots**
- Fuel tap ..... **closed**
- Magnétos ..... **OFF**
- Flaps ..... **as required**
- Battery ..... **OFF**

**Never attempt to make a U turn to return to the runway.**

**4.3. IN-FLIGHT RESTART**

**4.3.1. Starter motor restart**

If the altitude is sufficient to attempt to restart the engine :

- Airspeed ..... **92 knots**
- Fuel tap ..... **open**
- Electric fuel pump ..... **on**
- Throttle setting..... **1/2**
- Magnetos ..... **"BOTH"**
- Starter ..... **on**

**If the motor does not start, plan to make a forced landing.**

**4.3.2. Dive restart**

If the altitude is sufficient to attempt to restart the engine (minimum altitude lost 1500 feet) :  
Nose dive as explained :

- Airspeed ..... **>135 knots**
- Fuel Tap ..... **open**
- Electric pump..... **on**
- Throttle setting..... **1/2**
- Magnetos ..... **"BOTH"**

**If the motor does not start, plan to make a forced landing.**

**4.4. SMOKE AND FIRE**

**4.4.1. Fire on engine start**

Continue starting the engine (or leave it running if it is has already started)

- Throttle setting..... **fully open**
- Electric fuel pump ..... **off**
- Fuel tap ..... **closed**

If the fire persists :

- Magnetos ..... **off**
- Battery ..... **off**

**EVACUATE THE AIRCRAFT**

4.4.2. Airborne engine fire

- Fuel tap ..... **closed**
- Full throttle until the engine stops
- Electric fuel pump ..... **off**
- Cabin heating and ventilation ..... **closed**
- Airspeed ..... **92 knots**

Prepare for a forced landing with an engine inoperative.

4.4.3. Cabin fire

Extinguish the fire  
Open ventilation to eliminate the smoke.

In case of an electrical fire (recognised by the smell of burning insulation) :

- Reduce cabin ventilation
- Battery ..... **off**

**LAND QUICKLY**

4.5. GLIDING

- Recommended air speed, ..... **92 knots**
- Flaps . ..... **0°**
- Glide ratio ..... **16**

4.6. FORCED LANDING

4.6.1. Planned forced landing with engine stopped

Choose a suitable site

- Best glide ratio airspeed ..... **70 knots**
- Flaps ..... **retracted / as required**
- Belt / Safety harness ..... **tight**
- Electric fuel pump ..... **off**
- Throttle setting ..... **closed**
- Magnetos ..... **off**
- Fuel Tap ..... **closed**
- Battery ..... **off**

4.6.2. Planned forced landing with engine running

- Proceed as for a normal landing
  - Best glide ratio speed ..... **92 knots**
  - On final approach, unlock the canopy
  - Approach speed on final..... **65 knots**
- Prior to touchdown:
- Magnetos ..... **off**
  - Battery ..... **off**

4.7. RECOVERY FROM AN UNINTENTIONAL SPIN

- Throttle ..... **reduce**
- Flaps ..... **retract**
- Rudder ..... **opposite spin direction**
- Elevator ..... **to neutral**
- Aileron ..... **to neutral**

4.8. OTHER EMERGENCIES

4.8.1. Vibrations and erratic engine behaviour : likely causes.

- Contaminated fuel ..... **switch on the electric fuel pump**
- Ignition : magneto switch ..... **"L", then "R",**  
..... **then return to "BOTH"**

Select the position that gives the smoothest running and land as soon as possible on the closest runway.

4.8.2. Oil feed malfunction

If the oil pressure is low, look at the oil temperature

If the oil temperature rises (into the red), do not touch the throttle but contact the closest airfield and prepare to make a forced landing.

4.8.3. Icing

Avoid entering icing meteorological zones and change altitude.  
Set heating system to de-mist and/or apply carb heat (if equipped).

4.8.4. Electric generation failure

Low battery warning light ..... **lit**

4.8.5. Low voltage (voltmeter).

Switch off all non-essential electrical equipment and fly to the nearest airfield and land.

# 5. NORMAL PROCEDURES

## 5.1. INTRODUCTION

This section provides with a list of standard checks and procedures to be used in normal flight conditions. Procedures applicable to the use and check of optional equipment should be found in the "Supplementary systems and equipment" section.

## 5.2. DAILY CHECK

### 1 CABIN

- Seats ..... adjusted, locked
- Safety harness attachments ..... checked
- Elastic (left and right side)..... in place
- Flap control belt ..... in place, tight
- Primary wing attachment pins..... in place, safety pinned
- Front wing fixings ..... in place, secure
- Rear wing fixings ..... in place, secure
- Pitot tube ..... connected
- Controls ..... free
- Magneto contacts ..... off / cut
- Master (battery) switch..... on
- Fuel level ..... checked
- Fuel tank ..... check actual level
- Fuel filler cap ..... in place, locked
- Master (battery) switch..... off
- Documentation ..... all present and correct
- Weight and balance (including luggage) ..... checked
- Canopy condition (clean) ..... checked

### 2 FUSELAGE, LEFT SIDE

- Static vent, ..... clean, unobstructed
- Antenna mounting..... checked

Watch out not to hurt yourself with antennas

**3 TAIL**

- Smooth, non-blemished surfaces ..... checked
- Rudder ..... mounting / fixing / movement / cables / absence of play
- Tailplane.....mounting / fixing / movement / absence of play
  
- Control rod ..... in place, secure
- Anti servo tab control ..... in place

**4 FUSELAGE, RIGHT SIDE**

- Static vent ..... clean, unobstructed
  - Antenna mounting..... checked
- Watch out not to hurt yourself with antennas

**5 RIGHT WING**

- Aileron and flap conditions and hinges ..... checked
- Tightness to fuselage ..... checked
- Tightness & safety of front wheel and main undercarriage fairings and spats ..... checked
- Wing tip condition and safety, navigation lights (where fitted) ..... checked
- Main undercarriage .....brakes / tyre inflation checked

**6 ENGINE COWLS**

- Cowl fixing screws ..... checked
- Air vents ..... clean, unobstructed
- Propeller spinner ..... screws checked, no play or looseness
- Propeller ..... clean, good condition
- Oil level ..... checked
- Fuel drain : Check for absence of water and impurities .....operate and check
- Exhaust pipe ..... fixings checked
- Fuel tank air vent (beneath fuselage) ..... clean, unobstructed

\* To correctly determine the oil level it is necessary to remove and clean the dip stick before dipping and reading the level.

**7 LEFT WING**

- Main undercarriage (left) .....mounting, brakes, tyre inflation checked
- Pitot ..... clean, unobstructed
- Wing tip condition and security, navigation lights (where fitted) ..... checked
- Aileron and flap conditions and hinges ..... checked
- Tightness to fuselage ..... checked
- Tightness & security of front wheel and main undercarriage fairings and spats ..... checked

**5.3. PRE-FLIGHT CHECK**

Repeat the daily inspection

**5.4. NORMAL PROCEDURES AND CHECK-LISTS**

5.4.1. Cabin check prior to engine start

- Parking brake ..... **on**
- Flaps ..... **retracted**
- Seats ..... **adjusted**
- Rudder pedals ..... **adjusted**
- Safety harness ..... **tightened**
- Flight controls ..... **full and free**
- Pitch trim operation..... **full fwd / aft range checked / take-off position**
- Canopy ..... **closed not locked**

5.4.2. Cold engine start (ROTAX)

- Battery ..... **on**
- Fuel tap ..... **check function / open**
- Fuel Quantity ..... **noted**
- Electric fuel pump ..... **on**
- Propeller ..... **set minimum pitch**
- Throttle setting ..... **1/4**
- Choke ..... **pull**
- Propeller area ..... **clear**
- Magneto contacts ..... **BOTH**
- Starter ..... **operate when ready**

**As soon as the motor starts :**

- **Electric fuel pump** ..... **off**
- Choke ..... **push**
- RPM ..... **1 600 rpm**
- Oil pressure ..... **within yellow sector in 10 sec. (4 bar for Rotax 912)**
- Battery voltage..... **checked**
- Canopy ..... **locked / checked**

5.4.3. Hot engine start

- Battery ..... **on**
- Fuel tap ..... **open**
- **Electric fuel pump** ..... **on**
- Fuel quantity ..... **noted**
- Propeller ..... **full fine pitch**
- Throttle ..... **closed**
- Magnetos ..... **BOTH**
- Propeller area ..... **clear**
- Starter ..... **operate when ready**

**Then follow the procedure for starting when cold.**

5.4.4. Taxiing

- Parking brake ..... **off**
- Brakes ..... **checked**

5.4.5. Engine ground run

- Parking brake ..... **on**
- Oil temperature and pressure ..... **within green sector**
- RPM set to ..... **3 850 rpm**
- Magneto contact ..... **"L", BOTH, "R", BOTH**  
 ..... **max drop 300 rpm, max difference 100 rpm, checked**
- Reduce throttle setting ..... **1 600 rpm**
- Variable pitch Propeller (if installed) ..... **pitch regulation control**

5.4.6. Pre-take-off checks

- Magneto contacts ..... **BOTH**
- Controls ..... **full and free**
- Cabin (canopy, harness) ..... **checked**
- Oil pressure and temperature ..... **within green sector**
- Charge ..... **checked**
- Trim ..... **checked**
- Altimeter ..... **checked**
- Fuel tap ..... **open**
- Fuel quantity ..... **checked**
- Electric fuel pump ..... **on**
- Warning light panel ..... **unlit**
- Flaps ..... **Check full extension, and set to take-off position**
- Compass ..... **checked**

5.4.7. Take-off

- Minimum RPM at full throttle ..... **5 500 rpm checked**
- Take-off airspeed ..... **55 kts**
- Initial climb airspeed ..... **Vx : 76 kts**
- Climb airspeed when clear of obstacles ..... **Vy : 92 kts**
- Electric fuel pump @ 300 ft AAL ..... **off**
- Engine readings ..... **checked**
- Warning light panel ..... **unlit**
- Flaps ..... **Retracted**

5.4.8. Climb

Full throttle, maintain 92 kts I.A.S. until reaching 4000 ft AAL.

#### 5.4.9. Cruise

See "Performance" section for rpm setting and performances.

#### 5.4.10. Descent

- Fuel tap ..... **open**
- Engine minimum rpm..... **2 400 rpm**

#### 5.4.11. Approach

- Cabin (harness) ..... **tight**
- Electric fuel pump ..... **on**
- Flaps (under 90 kts)..... **extended**
- Warning light panel ..... **unlit**
- Altimeter ..... **set**
- Brakes ..... **free**
- Variable pitch Propeller (if installed) ..... **low pitch**

#### 5.4.12. Final

- Airspeed ..... **65 kts**

#### 5.4.13. Go-Around

- Airspeed ..... **>70 knots**
- Flaps ..... **retracted**
- Climb airspeed ..... **92 knots**

#### 5.4.14. Post-landing checks

- Flaps ..... **retracted**
- Electric fuel pump ..... **off**

#### 5.4.15. Engine Stop

- Parking brake ..... **on**
- Radio, Navigation and instruments ..... **off**
- Magnetos ..... **cut-off test @ 2000 rpm**
- Strobe light ..... **off**
- Magneto contact ..... **off**
- Battery ..... **off**

**Intentionally left blank**

## 6. PERFORMANCES

### 6.1. INTRODUCTION

This section provides approved information relating to standardised air speeds, stall speeds, take-off performance and supplementary non approved information.

The information given in the diagrams was obtained from flight tests with an aircraft and an engine in good condition and in the hands of an average pilot.

### 6.2. APPROVED DATA

#### 6.2.1. Airspeed indicator calibration

$$V = V_i + 1/23 \text{ knots}$$

#### 6.2.2. Stalling speed (knots)

$$m = 750 \text{ kg}$$

|            | Flaps | 0° | 17° | 30° |
|------------|-------|----|-----|-----|
| Bank angle |       |    |     |     |
| 0 °        |       | 61 | 51  | 47  |
| 30 °       |       | 65 | 54  | 50  |
| 60 °       |       | 86 | 72  | 66  |

$$m = 650 \text{ kg}$$

|            | Flaps | 0° | 17° | 30° |
|------------|-------|----|-----|-----|
| Bank angle |       |    |     |     |
| 0 °        |       | 56 | 47  | 44  |
| 30 °       |       | 61 | 51  | 47  |
| 60 °       |       | 80 | 67  | 62  |

### 6.2.3. Take-off performances (ROTAX 914 115 hp)

Take-off run = 400 m

Distance to 15 m = 550 m

### 6.2.4. Landing distances

Approach 57 kts = 1.3  $V_S$

Landing distance on a hard runway in standard conditions is 350 m.

### 6.2.5. Take-off distances calculation

Take-off distances must be increased by :

20% on a grass strip.

40% on a wet runway (take-off only)

They must be reduced by:

10% for each 10 kts head wind step.

They can be computed for intermediary masses by considering a 2.5% change for each 10 kg step.

### 6.2.6. Effect of rain and insects on aircraft performance, flying and handling qualities.

Decrease the performances by 4%

### 6.2.7. Cross-wind demonstrated performances

20 kts

### 6.2.8. Noise limitations

Noise certificate is not required for aircraft with certificate of restricted Airworthiness.

## 7. WEIGHT & BALANCE

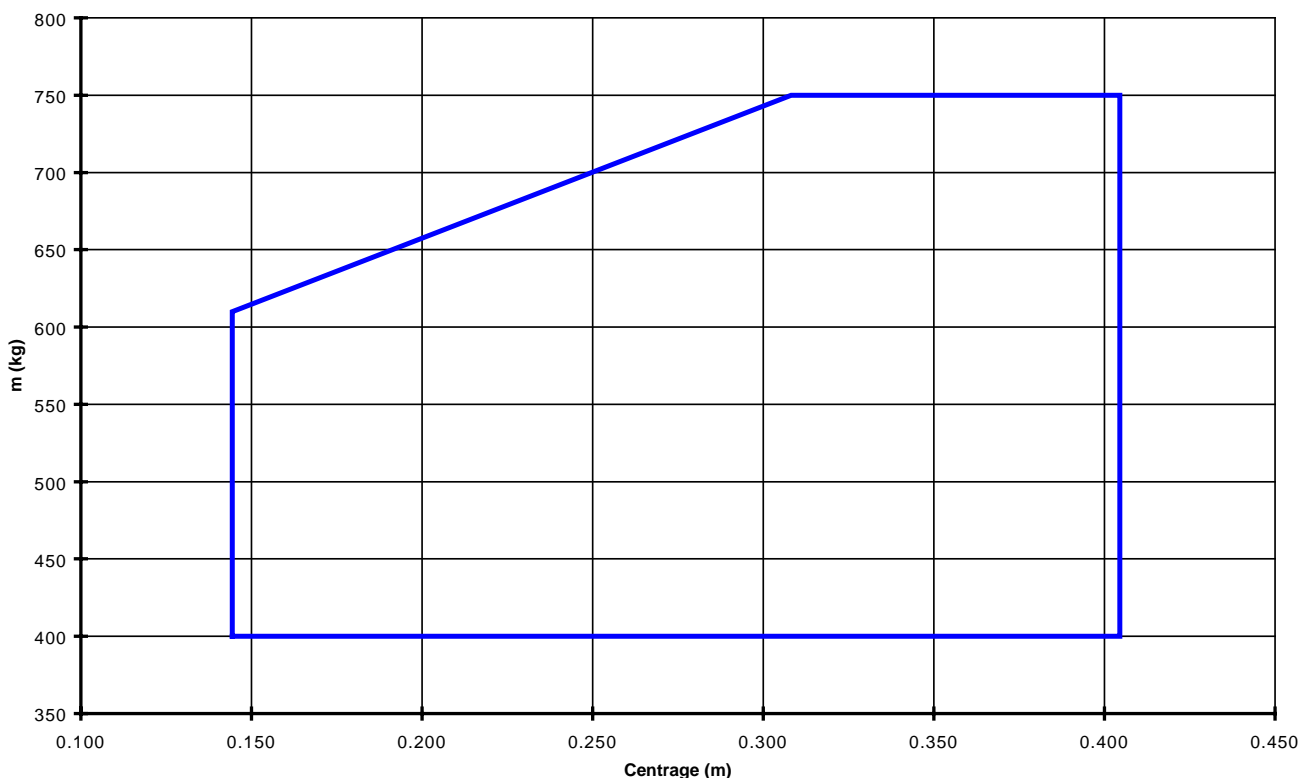
### 7.1. INTRODUCTION

This part presents loading cases where the aircraft can be safely operated.

Weighing and balance calculation procedures and a complete list of the equipment available (especially those mounted for weighing) on the aircraft are included in the maintenance manual.

### 7.2. WEIGHT & BALANCE REGISTRATION AND LOADING ENVELOPE

#### 7.2.1. Loading envelope :



M.A.C. = 960 mm ; reference datum : wing leading-edge.

7.2.2. Weight & balance procedure

|              | Weight | Moment arm |              |   | Moment |
|--------------|--------|------------|--------------|---|--------|
|              | kg     |            | m            |   | m.Kg   |
| Empty weight |        | x          |              | = |        |
| Pilots       |        | x          | <b>0.155</b> | = |        |
| Passengers   |        | x          | <b>0.960</b> | = |        |
| Luggage      |        | x          | <b>1.55</b>  | = |        |
| Fuel tank    |        | x          | <b>0.320</b> | = |        |

**Total Weight**

**Moment sum**

Note :

The above chart shows MCR mean moment arms. It must be completed with the actual empty weight and moment arm of the Aircraft. Also update if possible the actual moment arms of movable weight by weighing your Aircraft (refer to MBENOPP Weighing procedure).

Calculation method

- Note movable weights in fill above chart (shaded boxes).
- Compute total mass
- Multiply weights and corresponding moment arms and note the results in "Moment" column.
- Compute the moment sum.
- Divide the moment sum by the total weight. The result gives the location in meter of the actual Aircraft center of gravity.
- Check the computed moment arm is within the weight and balance envelope shown on previous page.

## 8. AIRCRAFT OPERATION, SERVICING AND MAINTENANCE

### **8.1. INTRODUCTION**

This section provides the procedures required by the manufacturer for the handling and the maintenance of the aircraft. It also shows a few maintenance and inspection requirements which must be fulfilled in order to ensure performance and reliability of a new aircraft. According to the environment and flight conditions, a lubrication and maintenance schedule must be applied.

### **8.2. AIRCRAFT MAINTENANCE SCHEDULE**

Advised inspections:

50 hours / 3 months  
100 hours / 6 months  
1 000 hours / 2 years  
2 000 hours / 4 years

**RESPECT MAINTENANCE MANUAL SCHEDULE Q EX NO 03**

### **8.3. AIRCRAFT MODIFICATIONS AND REPAIRS**

The Airworthiness authorities and the manufacturer must be informed before all modification or repair, which can change the aircraft Airworthiness.

## **8.4. PARKING**

Parking brake on,  
Canopy locked,  
Canopy cover advised,  
Main landing gear wheels chocked.

### **8.4.1. Parking requirements**

The Aircraft should not be left outside for prolonged period particularly in sea environment conditions.

In order to preserve the instrumentation during these periods, protect the canopy with a cover especially in sunny conditions. Also remember to close static and dynamic pitots.

After each period of outside parking, carry out a complete visual inspection of the Aircraft to look for evidence of corrosion. Protect static and dynamic pitots and wash the outside of the Aircraft with clean water.

### **8.4.2. Ground fixing**

The aircraft can be secured to the ground from the wheels.  
Wing attach fittings using 6 mm diameter captive nut can also be installed.

## **8.5. CLEANING AND TREATMENT**

Regularly clean all control surfaces and the inside of the aircraft.

Cleaning products must be suitable for surfaces to be cleaned. Check product before each canopy cleaning.

## **8.6. DE-RIGGING AND RIGGING**

You may have to disassemble the wings and the tailplane, to store the plane, or to carry out a maintenance check.

In such a case, please refer to the document QEXNO12 : MCR-4S DE-RIGGING / RIGGING PROCEDURE.

## 9. SUPPLEMENTARY SYSTEMS AND EQUIPMENTS

### 9.1. INTRODUCTION

This section presents the appropriate supplementary elements to safely and properly use the aircraft with the following optional systems and equipment that are not delivered with the standard aircraft (list to be completed by the assembler).

### 9.2. MINIMUM EQUIPMENT LIST

Flight instruments    Air speed indicator  
                                   Altimeter  
                                   Magnetic compass  
                                   Ball bank indicator

Engine instruments    Tachometer  
                                   Oil temperature  
                                   Oil pressure  
                                   Cylinder head temperature  
                                   Fuel level indicator

Oil level indicator

### 9.3. LIST OF THE SUPPLÉMENTARY SYSTEMS AND EQUIPMENTS

| Date | Document N° | Title of the supplementary element |
|------|-------------|------------------------------------|
|      |             |                                    |

### 9.4. SUPPLEMENTARY ELEMENTS DESCRIPTIONS